

# STRATACELL INSTALL INSTRUCTIONS



**1**  
**GRN20**  
Hold in place with supplied cable ties if necessary.



**2**  
**StrataCell**  
Start at the corner of the tree pit working outward.



**3**  
**Manifold**  
Sits on top of the RootSpace® lids.



**4**  
**120mm Pipe**  
Please cut to correct height.



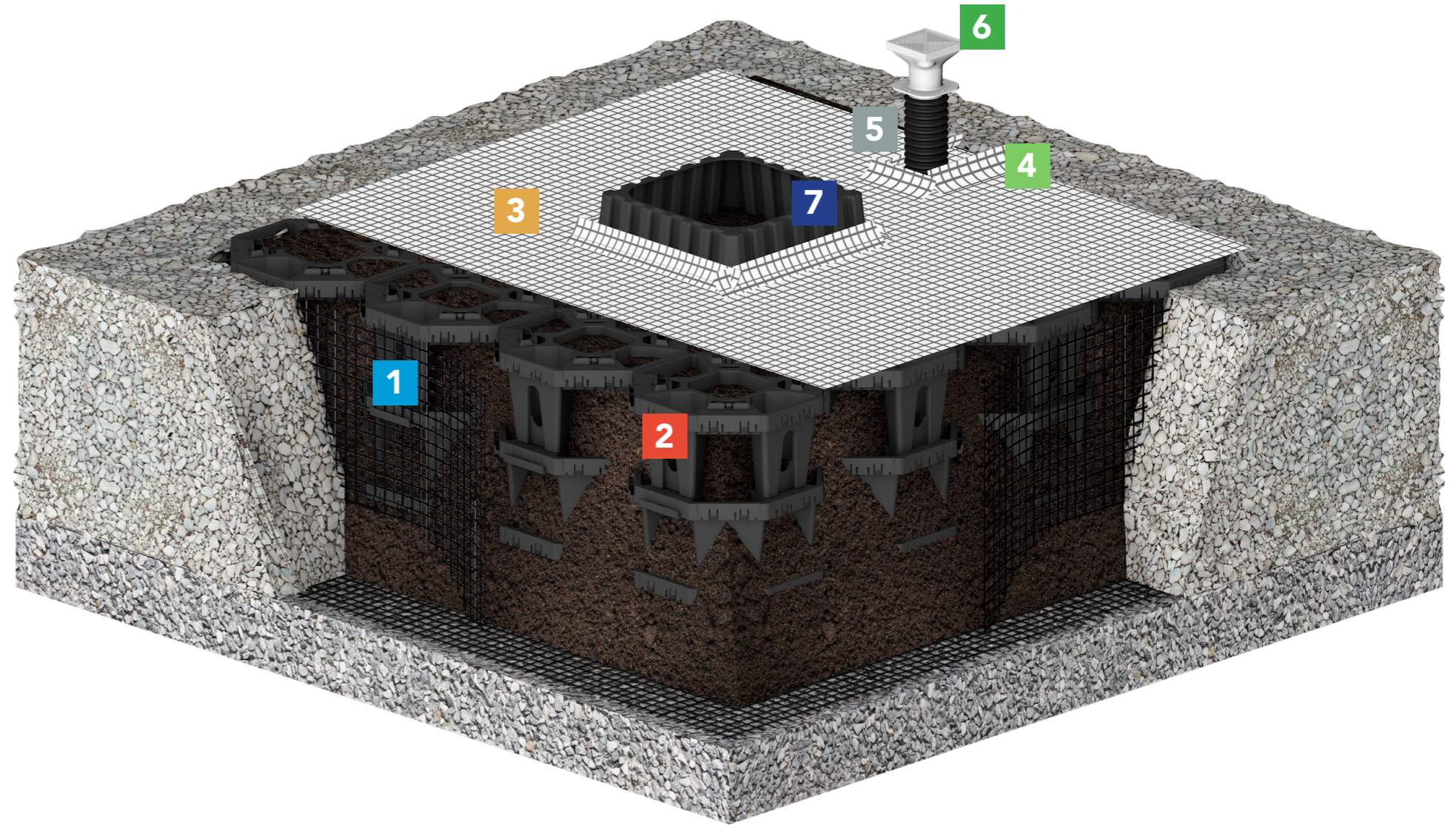
**5**  
**ArborVent 150**  
Finished flush with the paving surface level.



**6**  
**RootDirector**  
Placed on open aperture of tree pit.



**7**  
**GLTWGNA**  
Laid on top of RootSpace lids after soil filling.



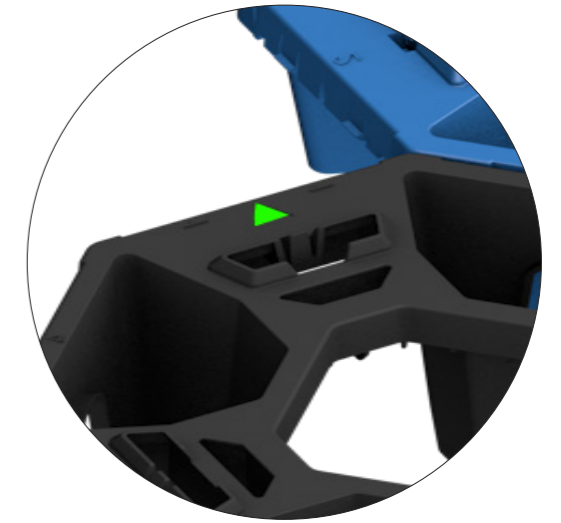
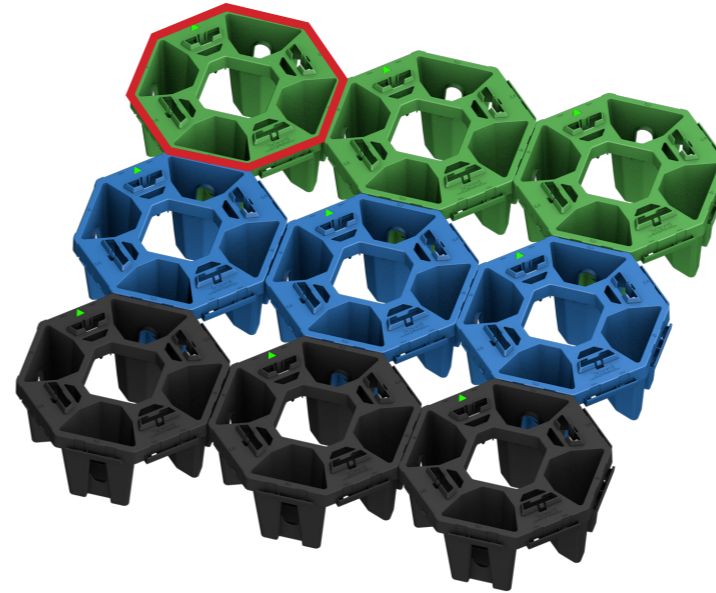
Drainage layer minimum depth 150mm, ideal depth 200mm. **MUST** be washed 10-20mm angular aggregate with no fines laid as **FLAT** as possible.

Call **01580 830 800** for technical support.

**1** Install first row of StrataCells (marked in red), working left to right.

**2** Install second row of StrataCells, working left to right.

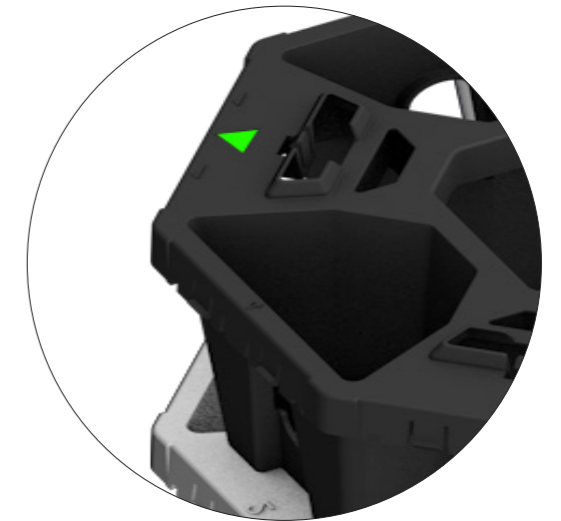
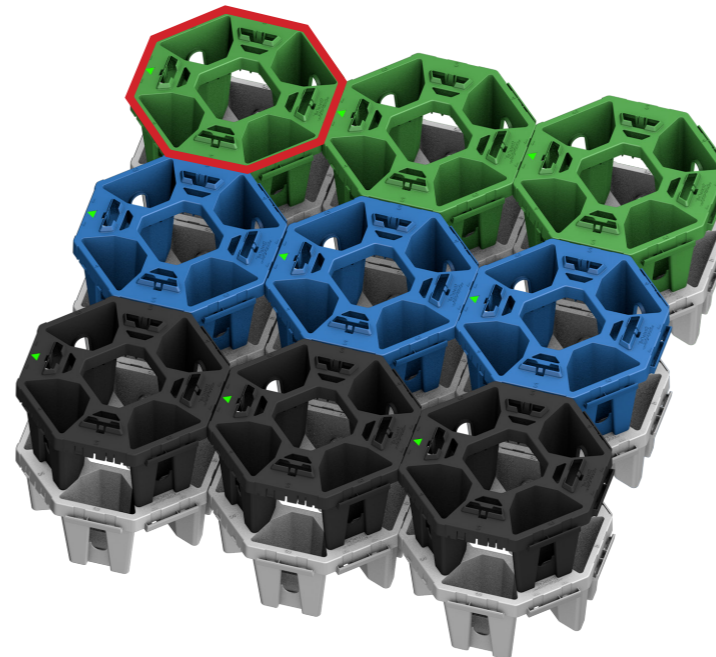
**3** Repeat process with subsequent rows to spec (see drawings).



**4** Begin second layer (marked in red), rotating StrataCells 45 degrees anti-clockwise (see arrows).

**5** Install second row of StrataCells, working left to right.

**6** Repeat process with subsequent rows to spec (see drawings).



**7** Begin third layer (marked in red), rotating StrataCells 45 degrees clockwise (see arrows).

**8** Install second row of StrataCells, working left to right.

**9** Repeat process with subsequent rows and/or layers. Please refer to original tree pit drawings.

