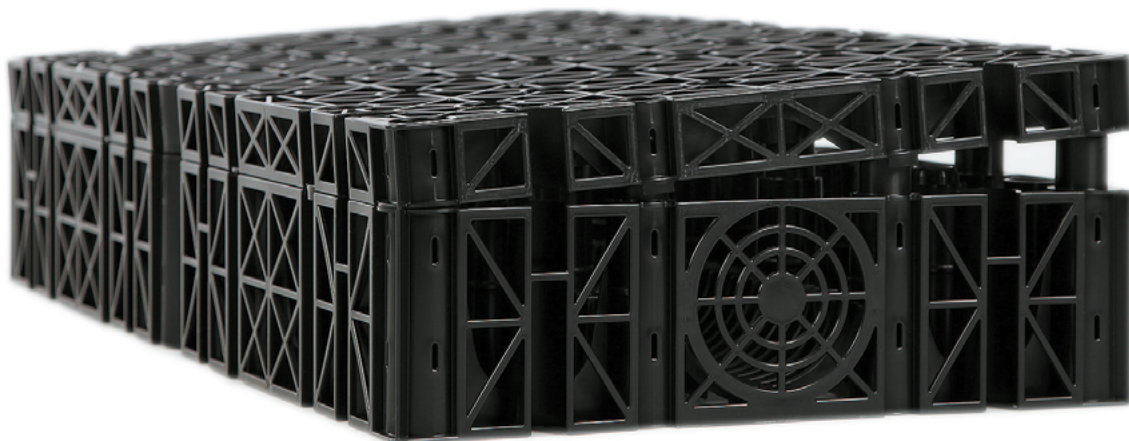


ArborCell

Load-bearing module designed for water attenuation.



Overview

The GreenBlue Urban ArborCell unit is a load-bearing module designed for water attenuation and distribution within the ArborFlow SuDS tree pit system.

Benefits

Recycled plastic
92% void space
High load bearing capacity

Benefits

Recycled plastic reduces landfill
Increased stormwater attenuation
Suitable for roadway applications



	Code	Description	Dimensions	Material	Finish	Colour
Technical Specification	GBUABC110B	ArborCell 110mm deep base unit	Combined 110mm base + 40mm cap) – 400 x 800 x 150mm	Recycled polypropylene	Natural	Black
	GBUABC40C	ArborCell 40mm deep cap	40mm	Recycled polypropylene	Natural	Black
	GBUABCCLIPA	ArborCell Clip	-	Recycled polypropylene	Natural	White

Test Results & Performance	Load bearing capacity > 1000 kN/m2* *crush tests performed by TNO
----------------------------	--

Storage	Not applicable.
---------	-----------------

Maintenance	Not applicable.
-------------	-----------------