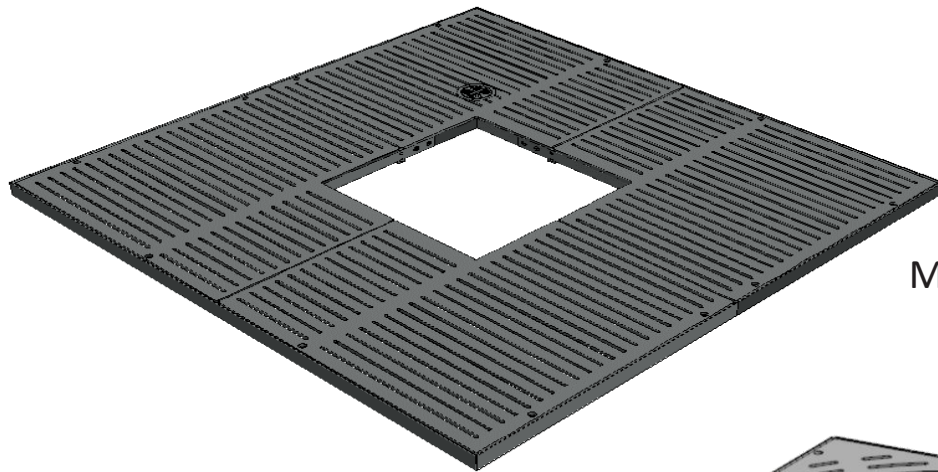


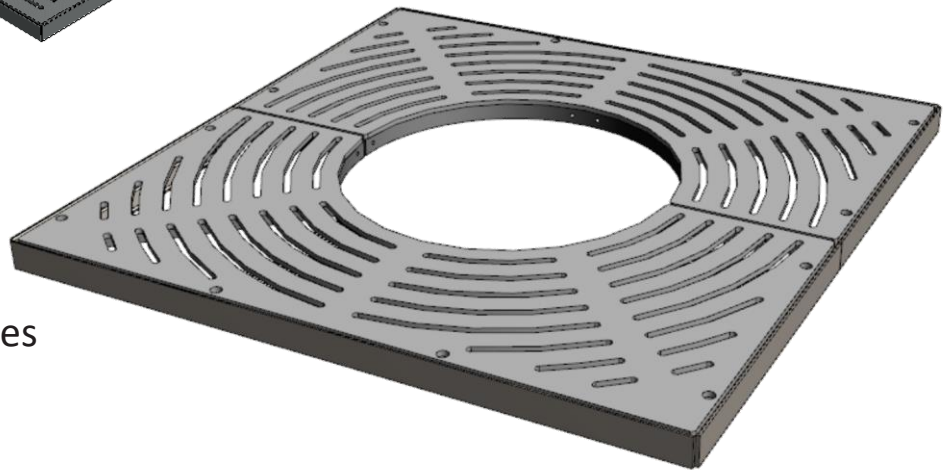
MONZA/THAMES

Tree Grille

Installation Guide

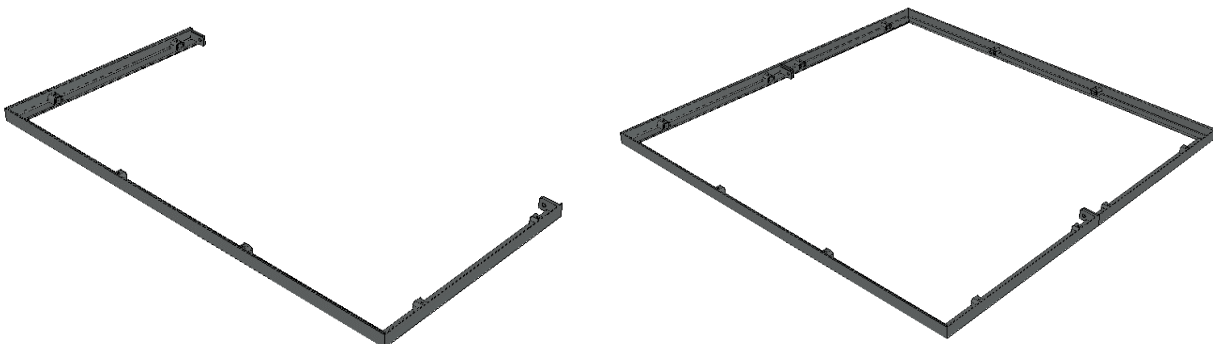


Monza



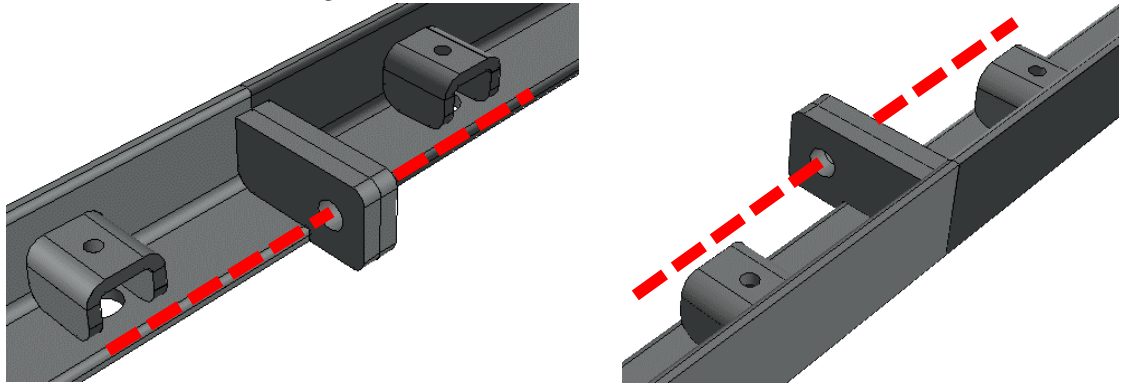
Thames

1. Prepare concrete haunch for tree grille as per engineers' drawings
2. Locate both frame halves together on concrete haunch

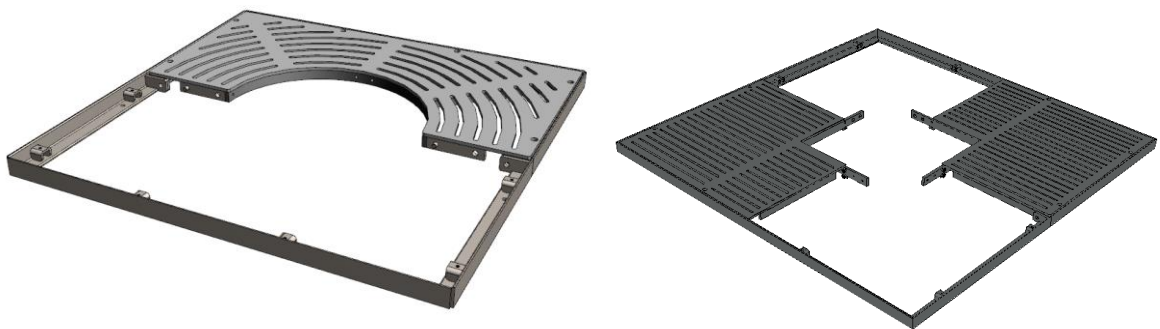


3. Bolt frame halves together

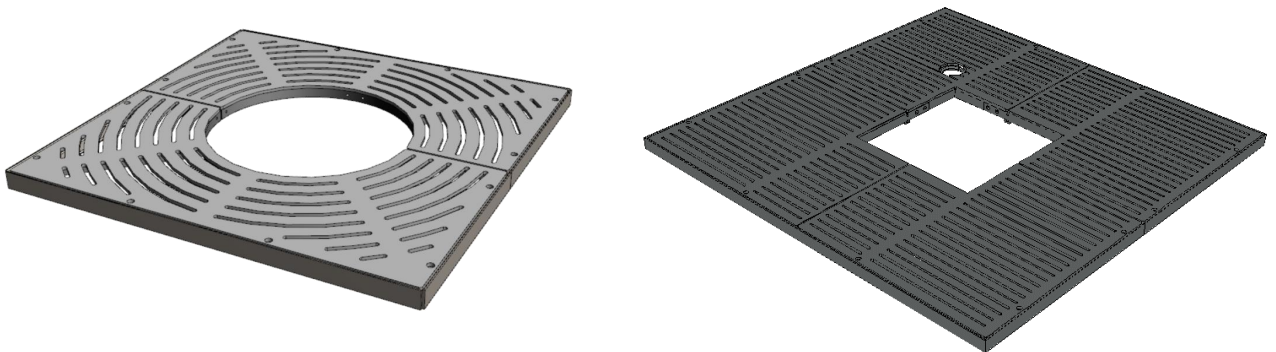
Use M8x20mm s/s hex bolt & serrated flange nut



4. Position segments as shown

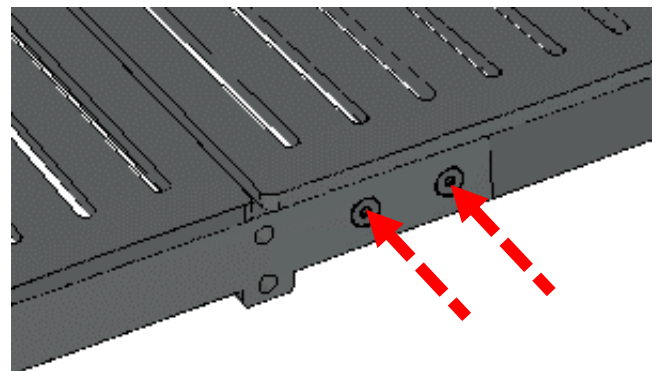
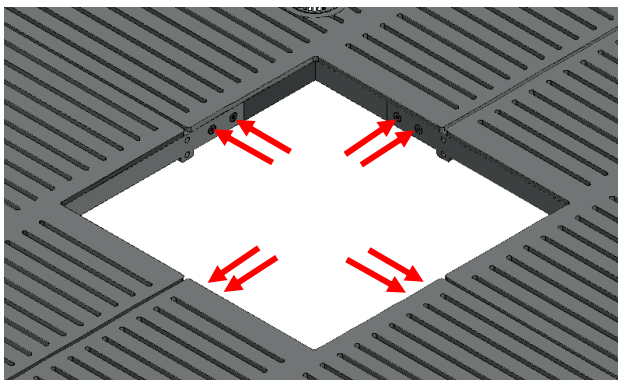


5. Position remaining segments as shown



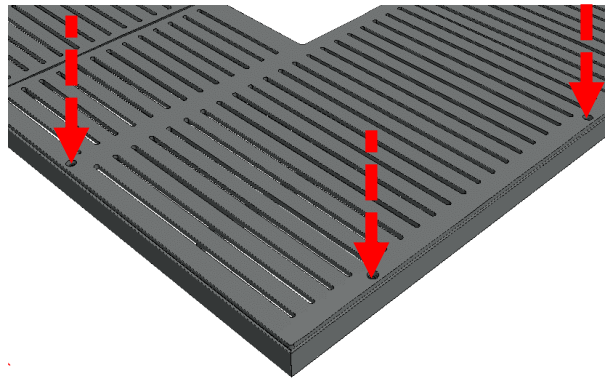
6. Bolt segments together (Monza only)

Use M8x35 s/s socket countersunk screw & serrated flange nut

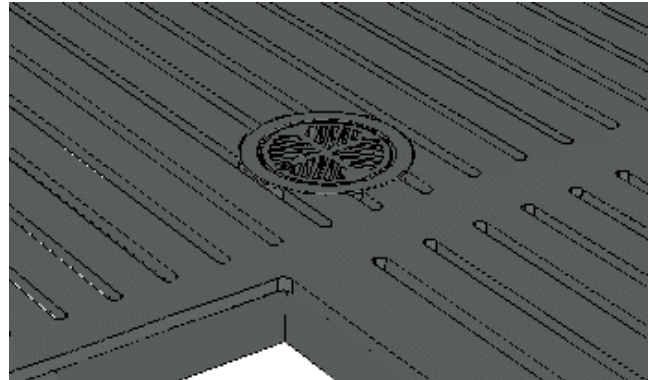


7. Bolt each segment down to frame

Insert M8x15mm s/s button head screws



8. Twist-lock HydroGrille into place ensuring correct connection with tree irrigation pipework



Fixings List

- 2x M8x20mm s/s Hex screws
- 10x M8 s/s serrated flange nuts
- 8x M8x35 s/s countersunk socket screws
- 12x M8x15 s/s button head socket screws

Grille components list

- 2x Frame halves
- 4x Grille segments
- 1x HydroGrille irrigation system